

Trumpet 1 (C)

SINFONIETTA
(1947).

Francis POULENC (1899-1963)

edited by Carl Simpson

I. Allegro con fuoco

Surtout pas lent que ($\text{♩} = 160-168$)

ff sec. 2 2 8 1

Ob., Hn. ff sec.

9 2 13 7 21

Flt., Vln.

23 25 28 1

Ob. sf ff sec.

30 33 2 5

ff sec.

40 41 3 46 4

Flt. Hns.

52 Solo con sord. 57 senza sord.

f très expressif

59 Solo 61 4 con sord. 65

f mordant f (pas trop fort)

67 70 $\text{♩} = \text{♩}$ exactement

mf f p

73 1 3 79 7

Cl. II

89 90 4 (con sord.)

Hn. Ob. mf molto

100 4 flutter 109 senza sord. 3

p doucement en dehors mf f V.S. Solo

Solo
112 (open)
f

117
ff

123 *♩ = ♩* précédente (exactement le double plus lent)
7 130 131 2 Solo
Hn. *mf*
ppp sub.

137 139 8 147 8
Hn. Flt.

Solo
151 2 con sord. 155 8 164 4 con sord. 168
f Tpt. II *p*

169 2 174 1 *Tempo I°* *♩ = ♩* précédente (Le double plus vite)
Très violent *pp* *ff* senza sord.

179 open
f sec. 182 4 con sord.

186 con sord. flutter
p 190 *mf*

194 198 3 Soli 4 senza sord.
ff léger et mordant

Soli
206 open *f* 212 3 *sf sec.*

213 217 TACET

II. Molto Vivace

C Trumpet I

3.

$\text{♩} = 160$

Strs. 10 13 Bsn., Vla.

15 5 23 Hn. Strs.

25 4 Hn. *f très gai*

34 8 42 2 46 Ob. Hn.

51 11 62 6 70 Cl. Vln.

72 4 78 11 89 con sord. Hn.

92 con sord. Solo *ff très gai* 4 4

96 11 107 2 111 15 Flt., Cl. Hn.

127 Ob. Vln. 131 8 139 Ob., Bsn.

141 7 148 4 156 Ob., Vln., Vla. Flt., Ob.

158 Vln. 5 166 Timp.

168 169 6 176 4 Ob., Vln. Flt., Cl.

181 *tr* 184 **8** con sord. *Soli*
Cl.
f

195 *senza sord.* **10** 206 **9**
Ob., Vln.

219 **12** 233 **8** 243
Bsn. Cl., Vla. Ob., Vln.

244 **2** (open) 251
f

253 *f* *mf* con sord. **7**

265 **10** 277 **4** 283
Flt., Ob. Flt., Ob., Hn. Vc.

286 **4** 293 *Soli lié* *poco*
Cl., Bsn. *mf*

298 *accel.* *senza sord.* 302 **6**
Bass **8**

310 **6** 318 **10** 328
Hn., Timp. Hn.

330 (open) *ff*

338 *court* 341 **11** 352 **2**
Vc.

Ralenti pour revenir strictement
ou tempo initial 365 *a tempo*

357 **6** **9** con sord.
Vc. Hn. Vlns.

376 Orch. 6 383 3 Strs. Hn., Timp. 401

389 6 con sord. *f* *fff*

404 senza sord. 3 2 (open) *ff* W.W.'s

III. Andante Cantabile

Andante (♩ = 63) Sub. più mosso (♩ = 84) (surtout sans rubato)

2 7 3

11 3 15 4 21 2 Vln. Vln.

24 2 con sord. *p* Ob.

31 35 senza sord. *p*

36 5 42 2 Ob. tr tr

49 Sans presser 50 8 58 6 Ob. Hn.

66 7 74 4 80 Ob. Hn. Hn. V.S.

81 open
pp doucement chanté mais sans vibrato *ppp*

86 2 89 2 con sord.
p

93 senza sord.
 2 99 3 3
 Tpt. II

106 107 4 2 117 2
 Ob. Vln. Vln.

119 Soli open longa
pp *ppp*

IV. Finale

Prestissimo et très gai
 (♩ = 92)

2 4 4 9
ff sec. Vln.

10 5 15 2
 Vln.

20 Soli
ff Vln.

25 3
 Cl.

33 34 9 43 3

Hn.

48 8 51 4

Flt. Hn. Vln. Flt., Ob.

56 Soli 57 Surtout sans ralentir 5

ff très sec.

64 5 72 accel.

Flt.

73 6 81 Solo

Bsn. *mf très léger et mordant*

82 flutter *ff* *sub. p*

85 *mf* *f* Toujours sans ralentir 2

90 con sord Solo senza sord. 2

f

96 open Céder à peine 2 9100 a tempo 5

ff

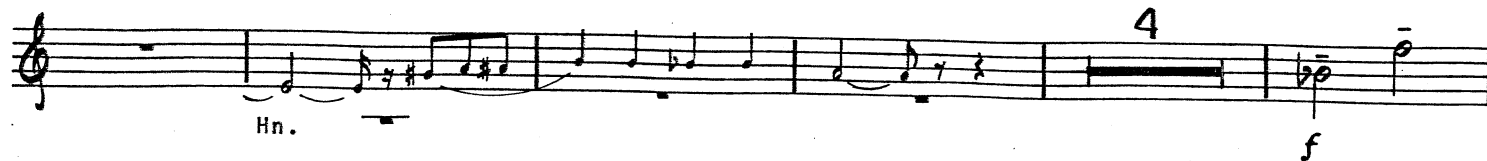
105 7

Vln.

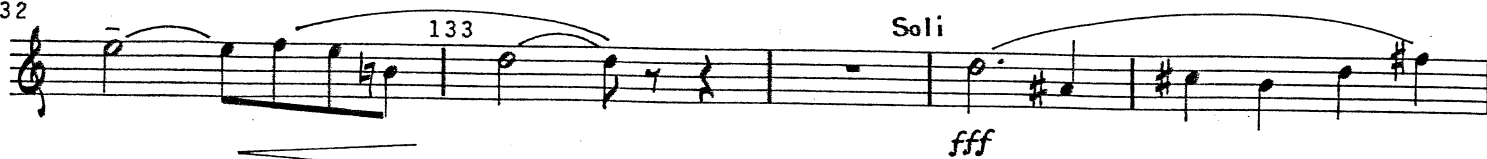
116 2 120

Cl. Ob., Vln.

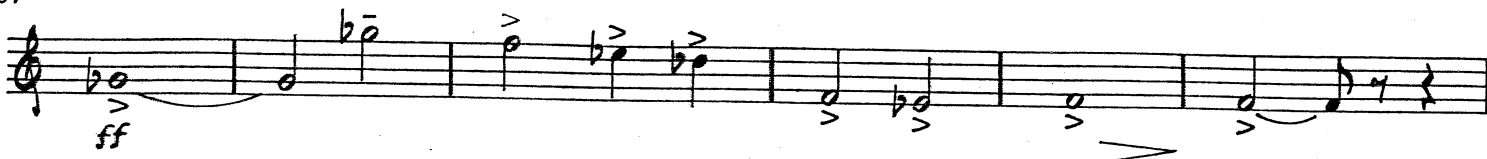
123



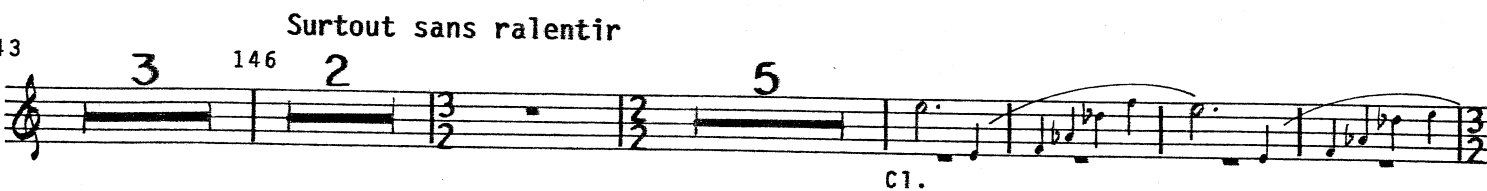
132



137



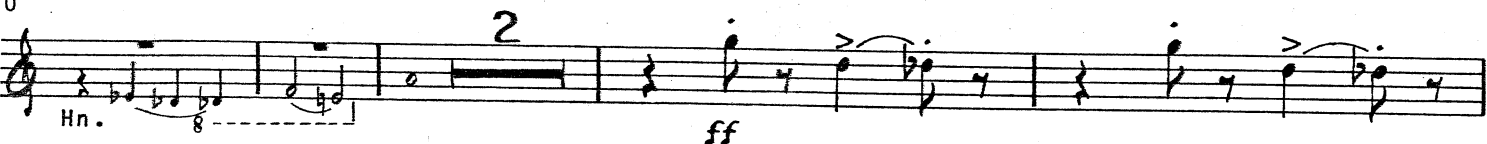
143



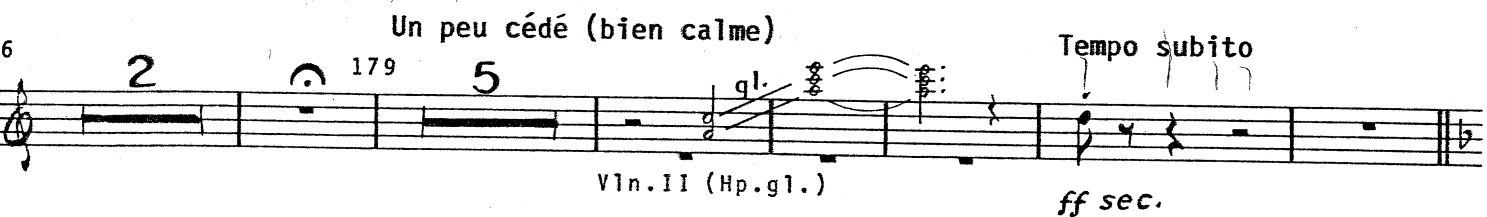
158



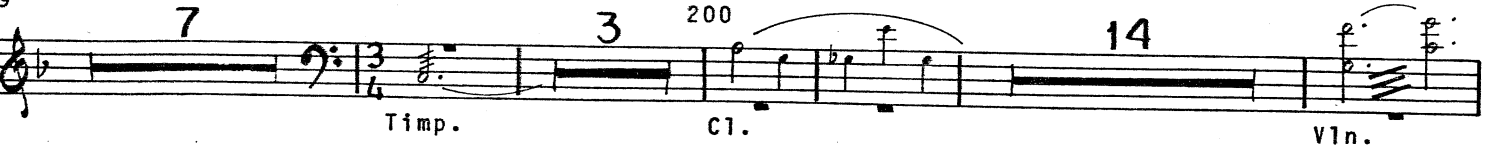
170



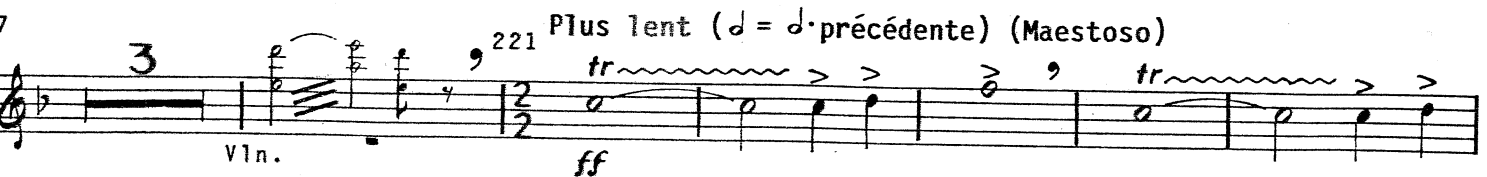
176



189



217



226

